



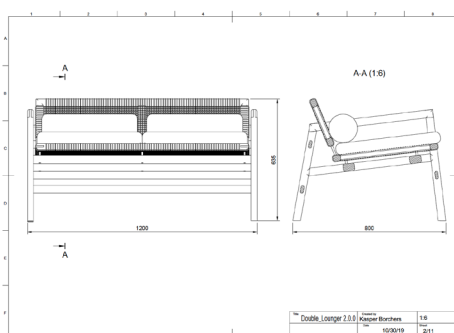
Lounger Chair

CODE	2.00.00	Our outdoor lounges can be combined easily to a larger seating group. As the lounge chair our outdoor lounge is made from portuguese eucalyptus wood and woven flax or coir rope. The dimensions of the building groups are similar to the ones used in our other outdoor furniture products.	Materials -Structure: made of Portuguese eucalyptus wood Suitable for outdoor use. -Seat/Backrest: Woven flax yarn or coconut yarn.
WIDTH	1200		
DEPTH	800		
HEIGHT	635		
SEAT HEIGHT	336		
ARM HEIGHT	580		
MASS	9kg		
DESIGNER	Kasper Borchers		
ASSEMBLY	Not required		

DIMENSIONEN

MATERIALS

ACCESSORIES



SELECTION ROPES SEAT/BACKREST AREA

- 1**
MATERIAL: COCOS
COLOUR: NATUR
- 2**
MATERIAL: FLAX
COLOUR: NATUR

SELECTION OF LINEN CUSHIONS

- 10**
MATERIAL: SISAL
COLOUR: NATUR
- 11**
MATERIAL: LEINEN
COLOUR: BEIGE

ACCESOIRES

- 6001 : Seat cushion
- 6002 : Cylidric Kisses
- 5001 : Protective cover (Single Chair)
- 5002 : Protective cover (4 chairs)